

FOREST GROVE ELEMENTARY
ROOFING & PAINTING
PROJECT No. MD-003

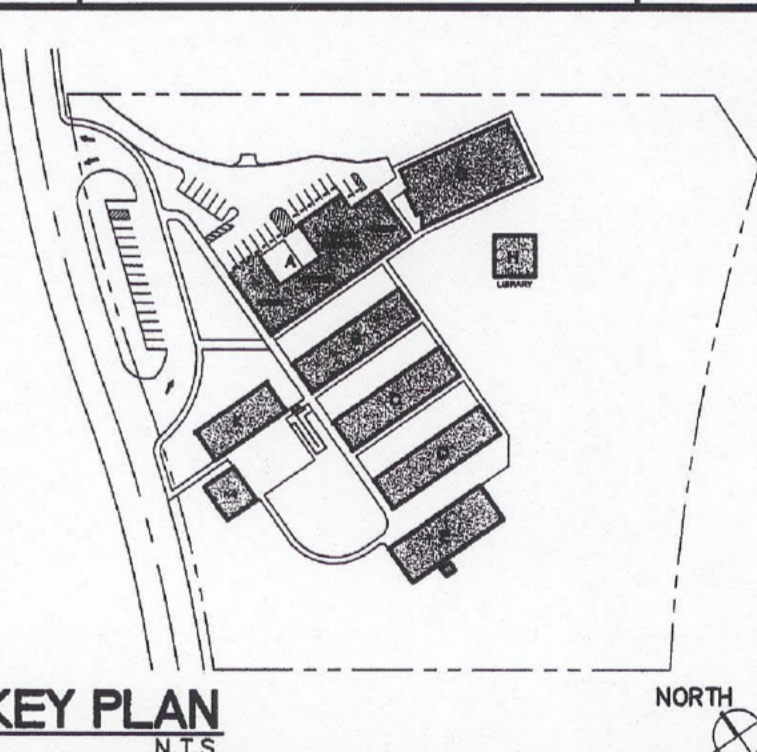
Buildings:

A
G
K

Consultants:

Revisions

No.	Description	Date



Forest Grove Elementary School

1065 CONGRESS AVENUE
PACIFIC GROVE, CA. 93950

SITE PLAN

Drawn by:

Checked:

Approved:

Project No.
MD-003

Date
NOVEMBER 30, 2009

Drawing No.

A1.1

37 SITE PLAN

1" = 30'-0"

GENERAL NOTES:

1. EVERYTHING IS EXISTING UNLESS OTHERWISE NOTED.
2. SEE SHEET AB.1 FOR GATE SCHEDULE

LEGEND:

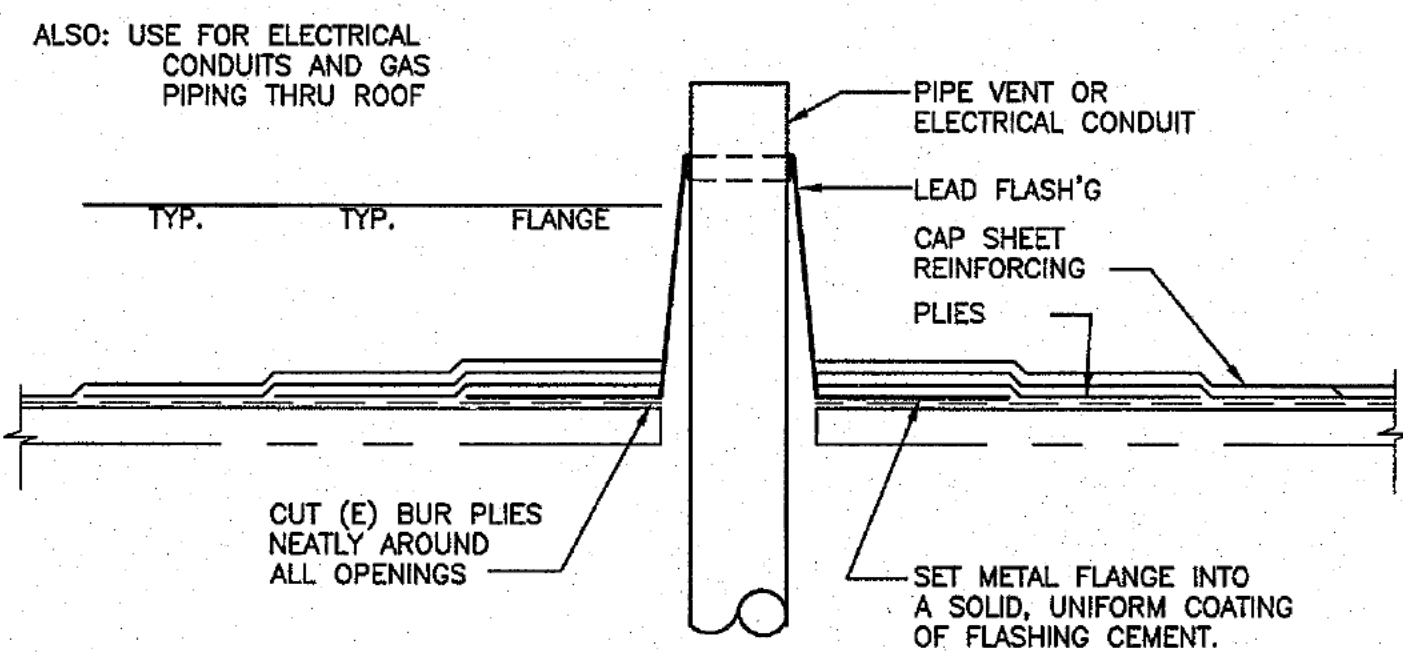
- (E) FENCE TO REMAIN
- (E) FENCE TO BE REMOVED
- (N) CHAIN LINK FENCE -
- (N) ORNAMENTAL FENCE -
- (E) PROPERTY LINE

CONSTRUCTION NOTES:

1. RESTRIPE (E) A.C. PAVING THIS PLAY AREA
2. PROVIDE KNOX BOX FOR FIRE DEPT. ACCESS - INSTALL LOCATION AS REQUIRED BY FIRE DEPARTMENT
3. (N) PARKING STRIPING
4. (N) 6'-0" HIGH FENCE TO REPLACE (E) FENCE
5. (N) 3'-6" HIGH FENCE
6. (E) TOW-AWAY SIGN PER DSA # 01-103373
7. (E) ACCESSIBLE RAMP PER DSA # 01-103373
8. (N) HI-LOW ACCESSIBLE D.F.
9. (N) 6'-0" HIGH CHAINLINK ENCLOSURE w/ SLATS TO REPLACE (E) GRAPE STAKE FENCE
10. (E) GAS METER TO REMAIN, VERIFY CLEARANCES FOR (N) FENCE
11. (N) 6'-0" HIGH FENCE
12. (E) 1:20 SLOPED WALK PER DSA # 01-103373
13. NEW FENCE LOCATION ALONG SOUTHEAST PROPERTY ADJACENT TO P.G. HIGH SCHOOL SOUTH PARKING LOT TO BE COORDINATED WITH PACIFIC GROVE SCHOOL'S CONTRACTOR
14. (N) TOW-AWAY SIGN -
15. (N) 4" WIDE WHITE STRIPE FOR PEDESTRIAN CROSS WALK
16. REPAIR LANDSCAPE IRRIGATION SYSTEM AND REPLACE LANDSCAPING TO MATCH (E) & (N) SEWER LINE - SEE MECH/PLUMBING DWGS.
17. REPAIR A.C. PAVING TO MATCH (E) & (N) SEWER LINE - SEE MECH/PLUMBING DWGS.
18. (N) GREASE INTERCEPTOR - SEE MECH/PLUMB. DWGS.
19. (N) (N) LIGHT POLE - SEE ELECT. DWGS.

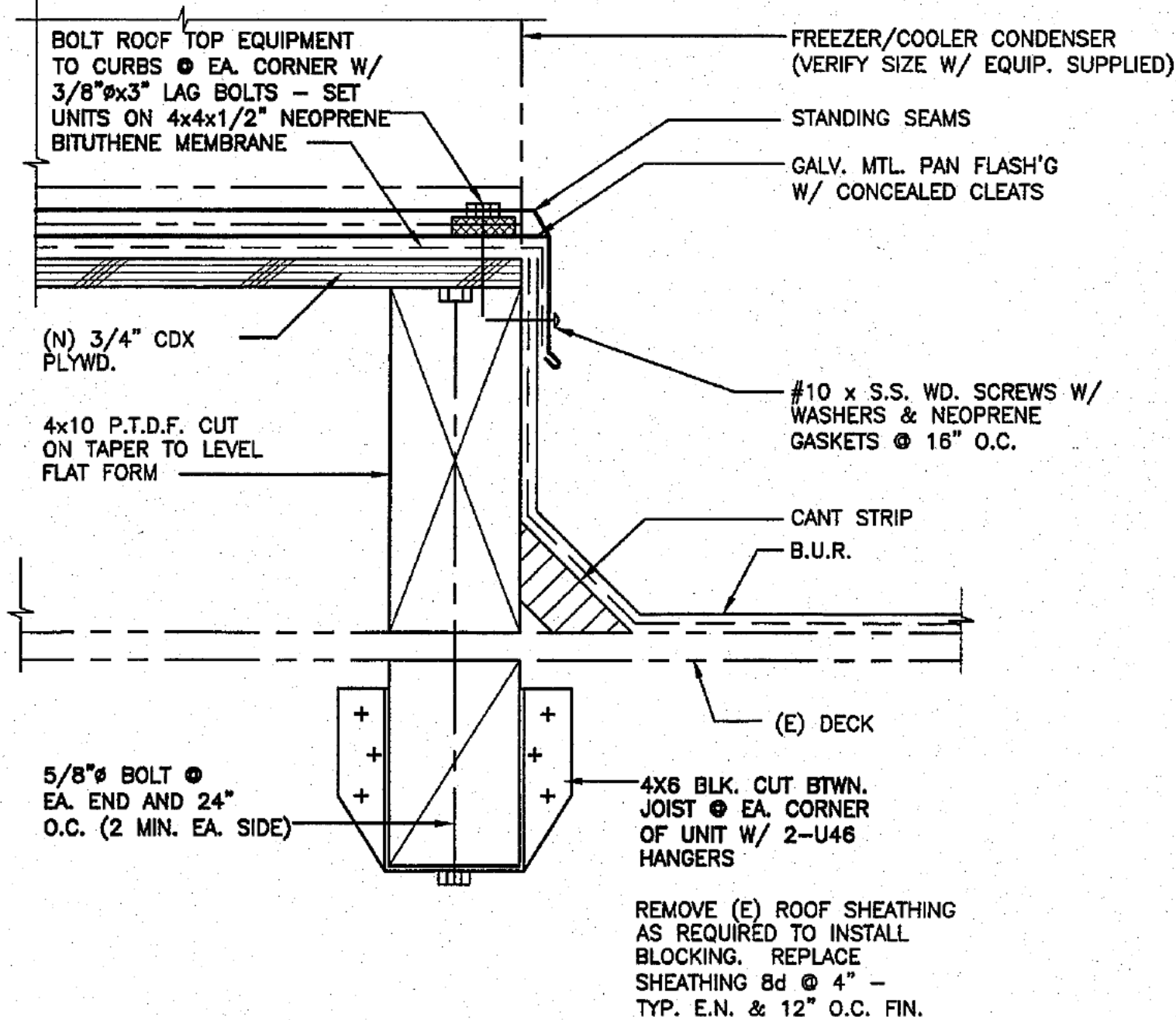


IF THIS SHEET IS NOT 30" X 42", IT IS A REDUCED PRINT. SCALE ACCORDINGLY



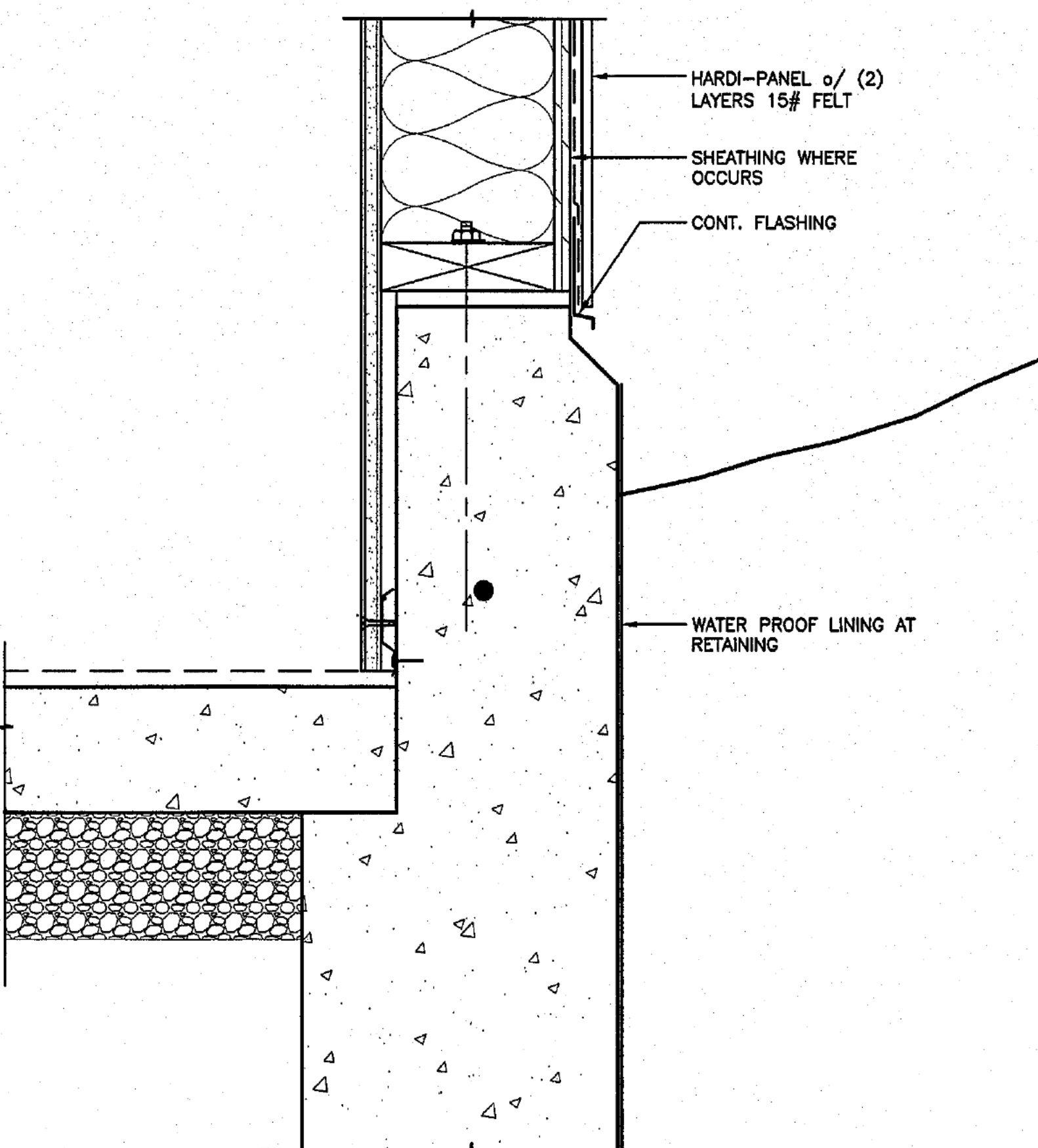
40 TYP. VENT PIPE THRU ROOF

3"=1'-0"



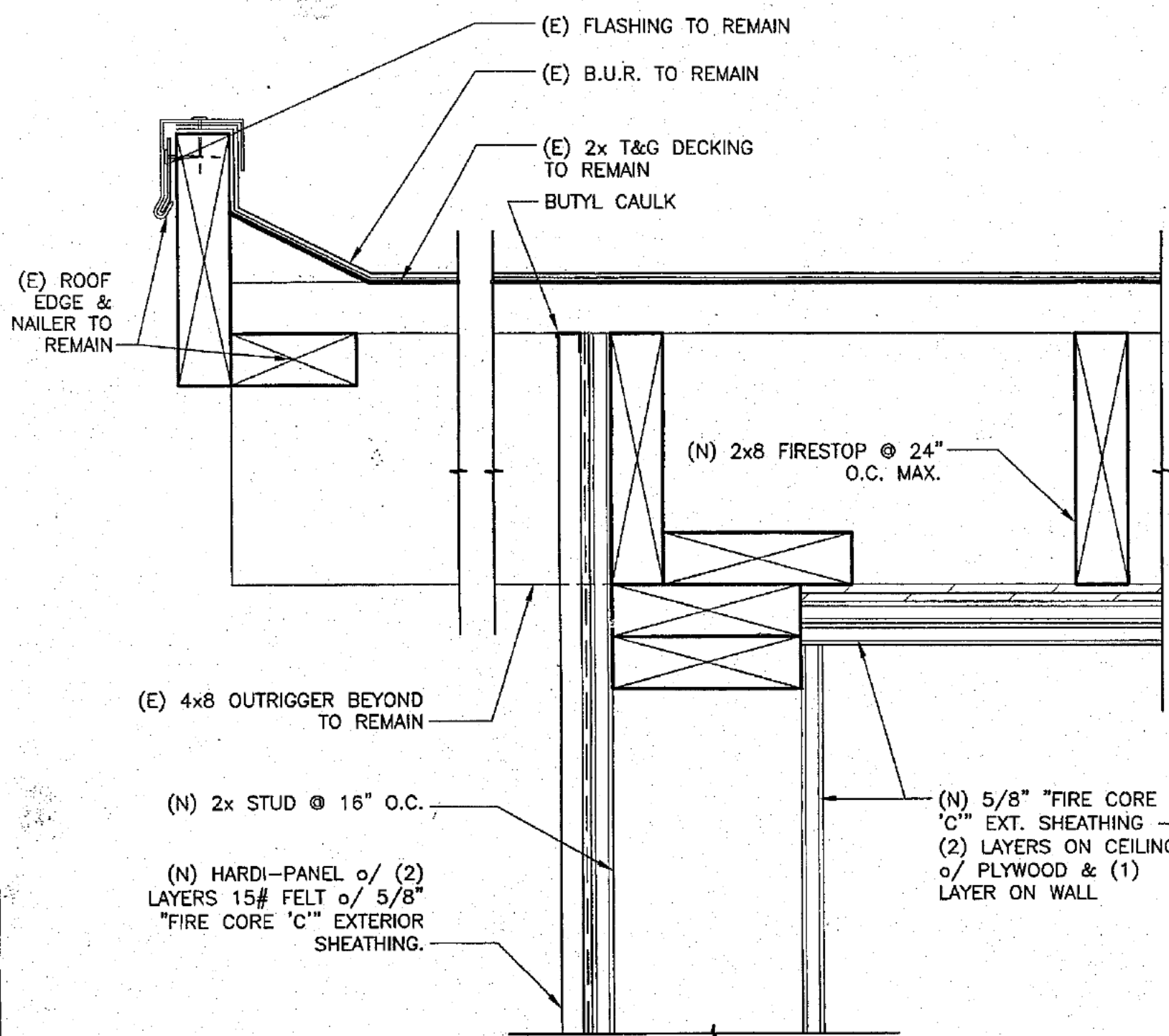
38 EQUIPMENT PLATFORM

3"=1'-0"



36 BLDG 'E' - RETAINING

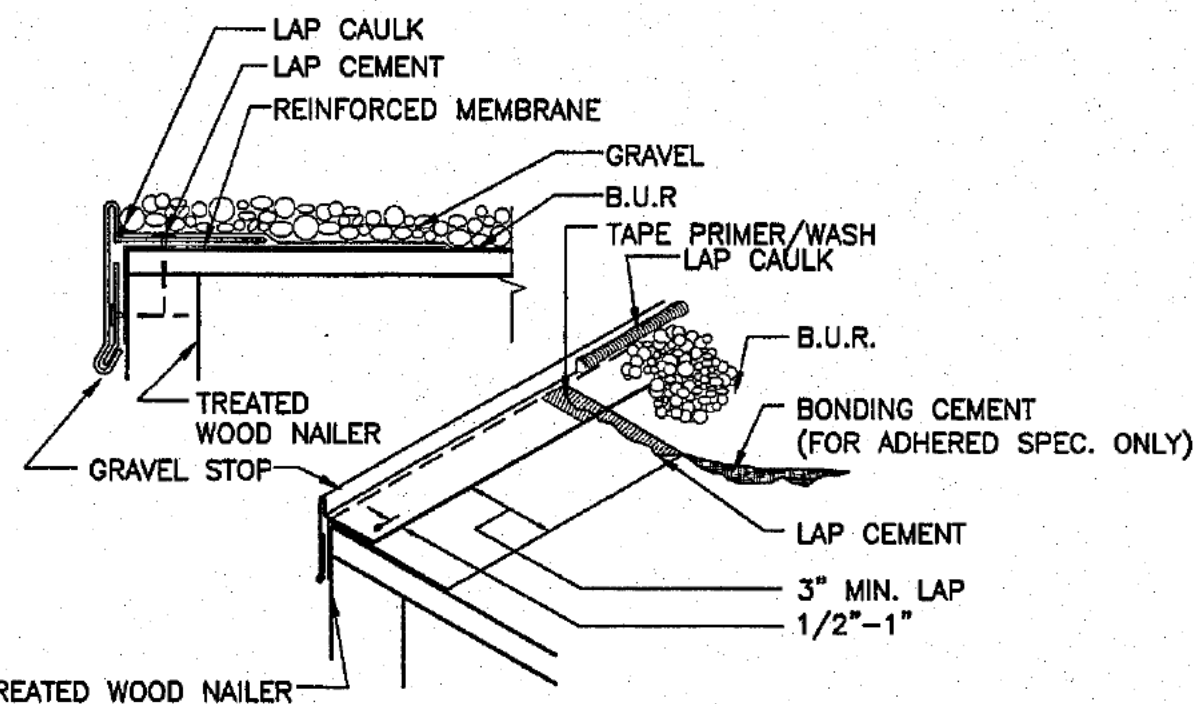
3"=1'-0"



CBC TABLE 720.1(3)
ITEM No. 21-1.1
1-HOUR CONSTRUCTION

29 ROOF @ MECH. ROOM

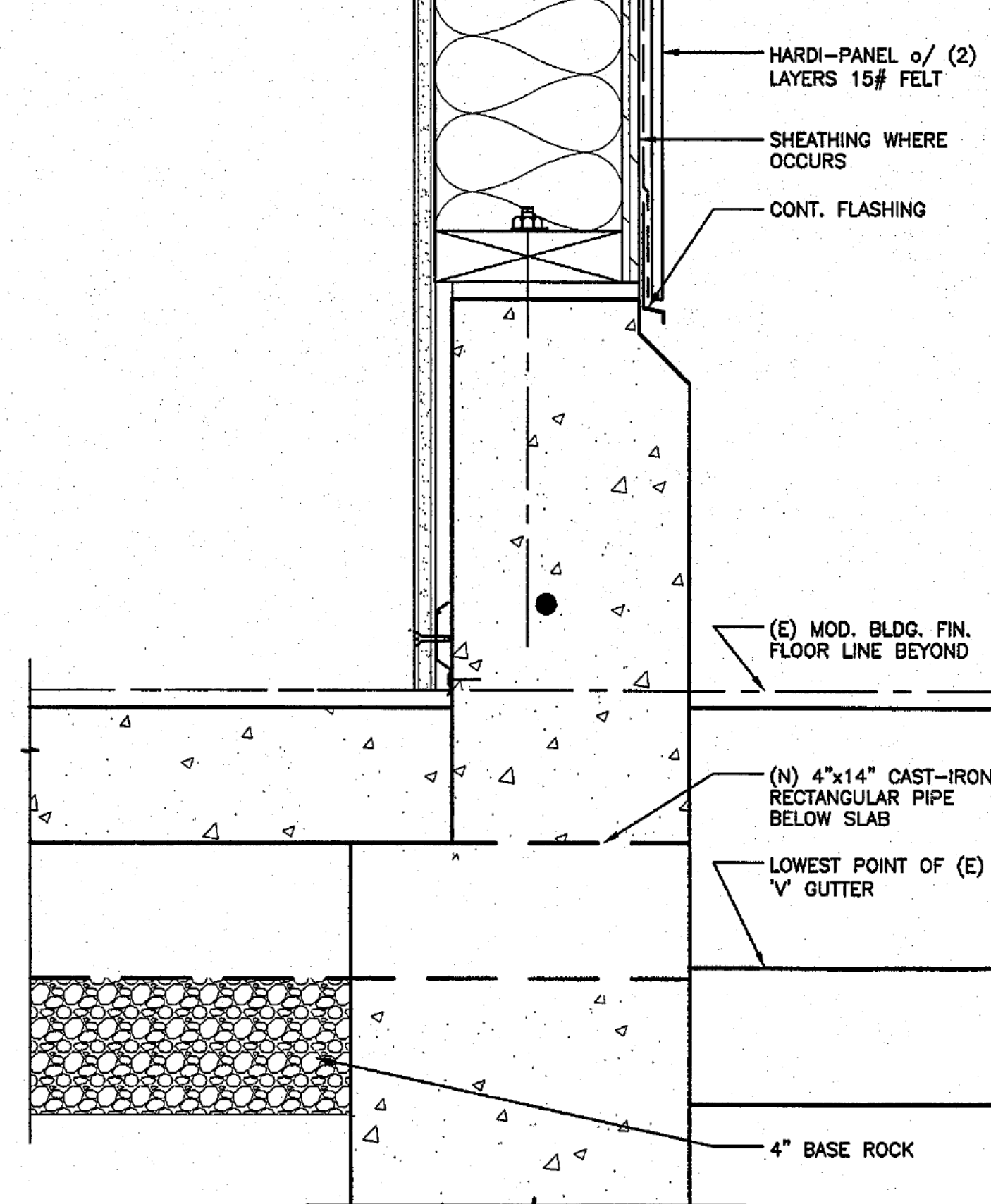
3"=1'-0"



NOTES:
1. TOTAL WIDTH OF REINFORCED STRIP SHALL PROVIDE COMPLETE COVERAGE OF THE FACE OF THE WOOD NAILER AND MINIMUM 3" (80mm) WIDE SPLICE BEYOND FLANGE. (6" [150mm] WIDE EPDM ULTRABOND REINFORCED TERMINATION STRIP (RTS) WILL NOT BE SUFFICIENT.)
2. FASTENERS AND FASTENER PATTERN AS RECOMMENDED BY GRAVEL STOP MANUFACTURER.
3. FOR BALLASTED SPEC. ONLY, GRAVEL STOP MUST EXTEND ABOVE BALLAST SURFACE TO RETAIN BALLAST.

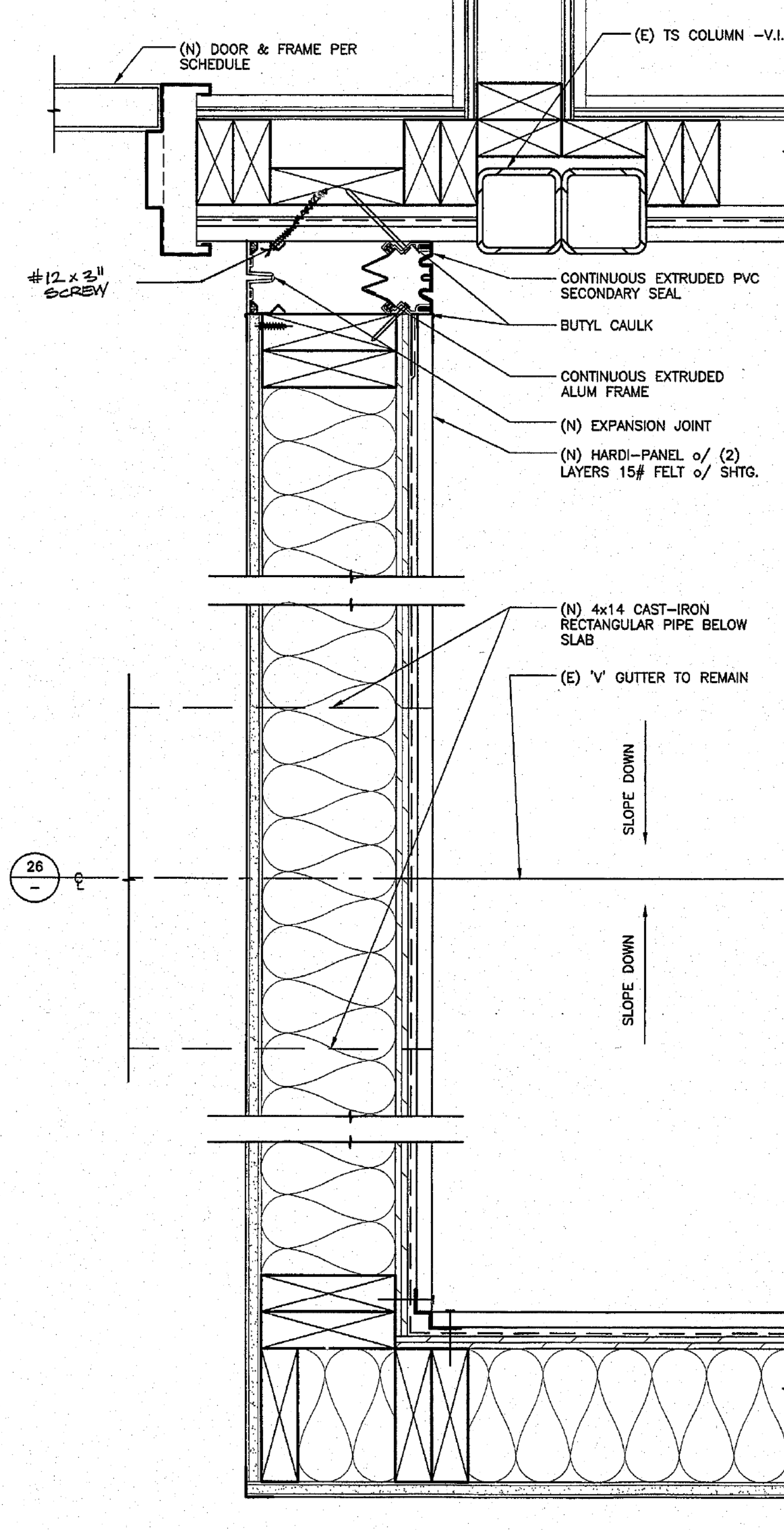
28 BLDG 'E' - ROOF EDGE

3"=1'-0"



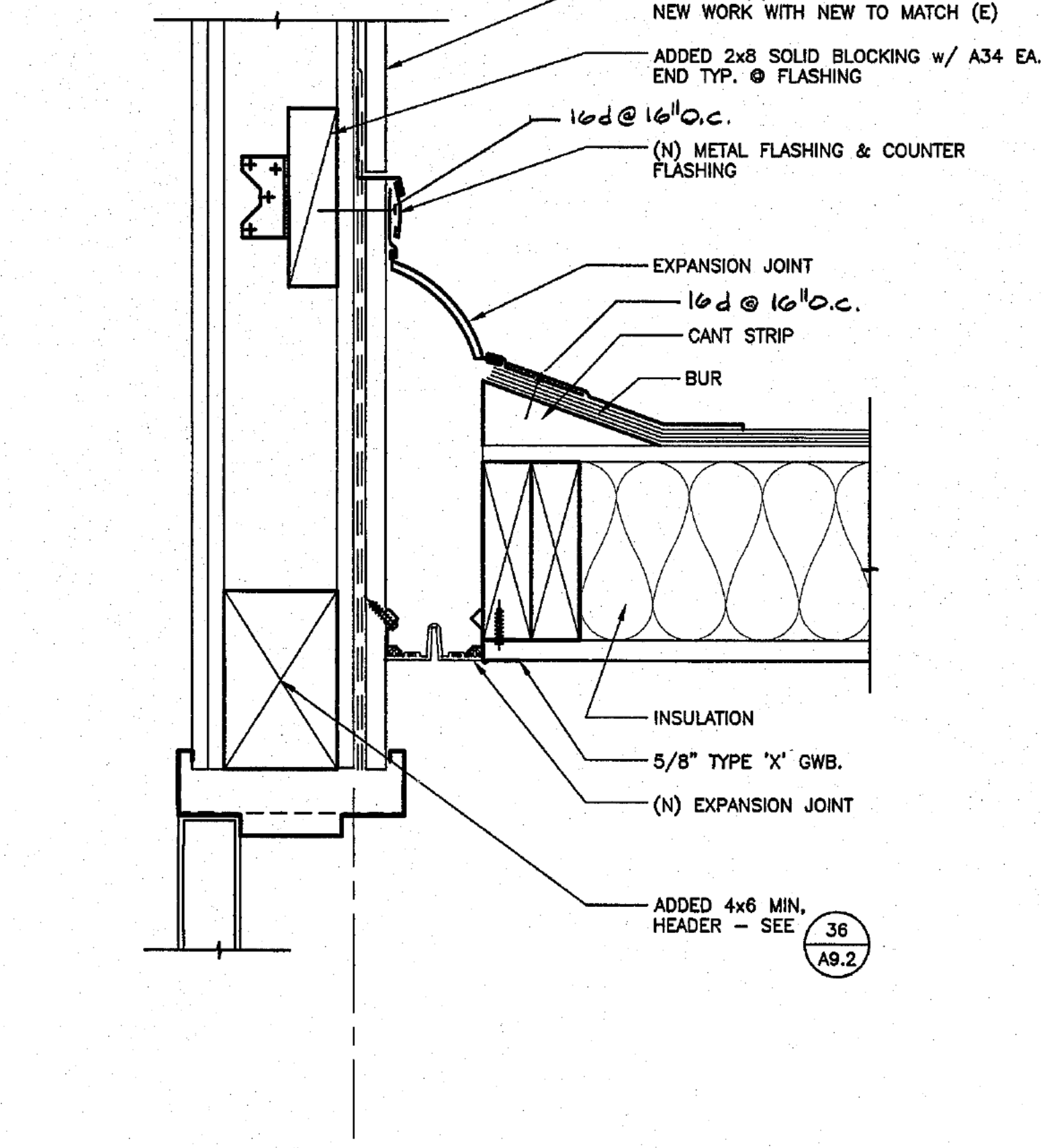
26 BLDG 'E' - (N) DRAINAGE PIPE

3"=1'-0"



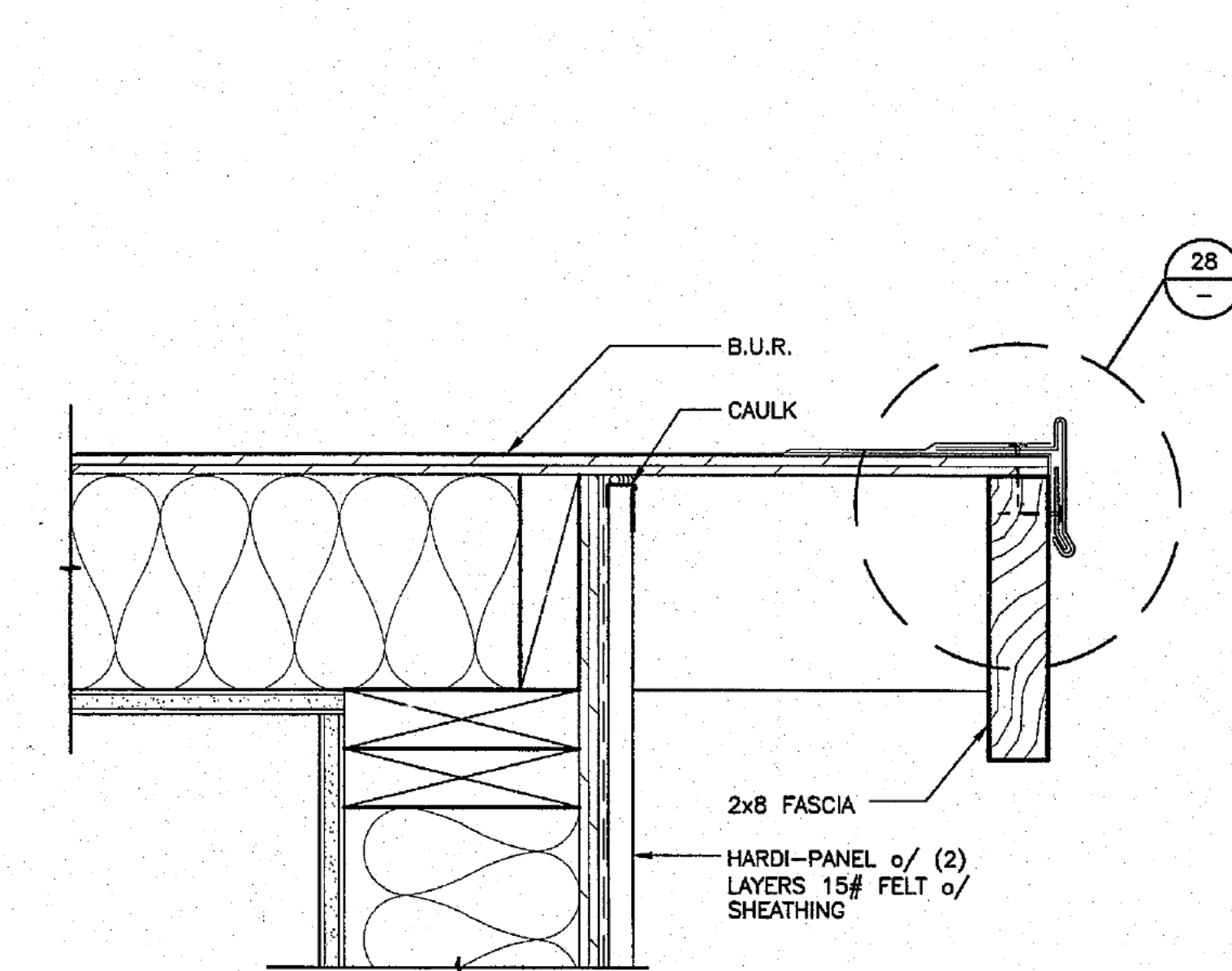
18 BLDG 'E' - WALL TO WALL

3"=1'-0"



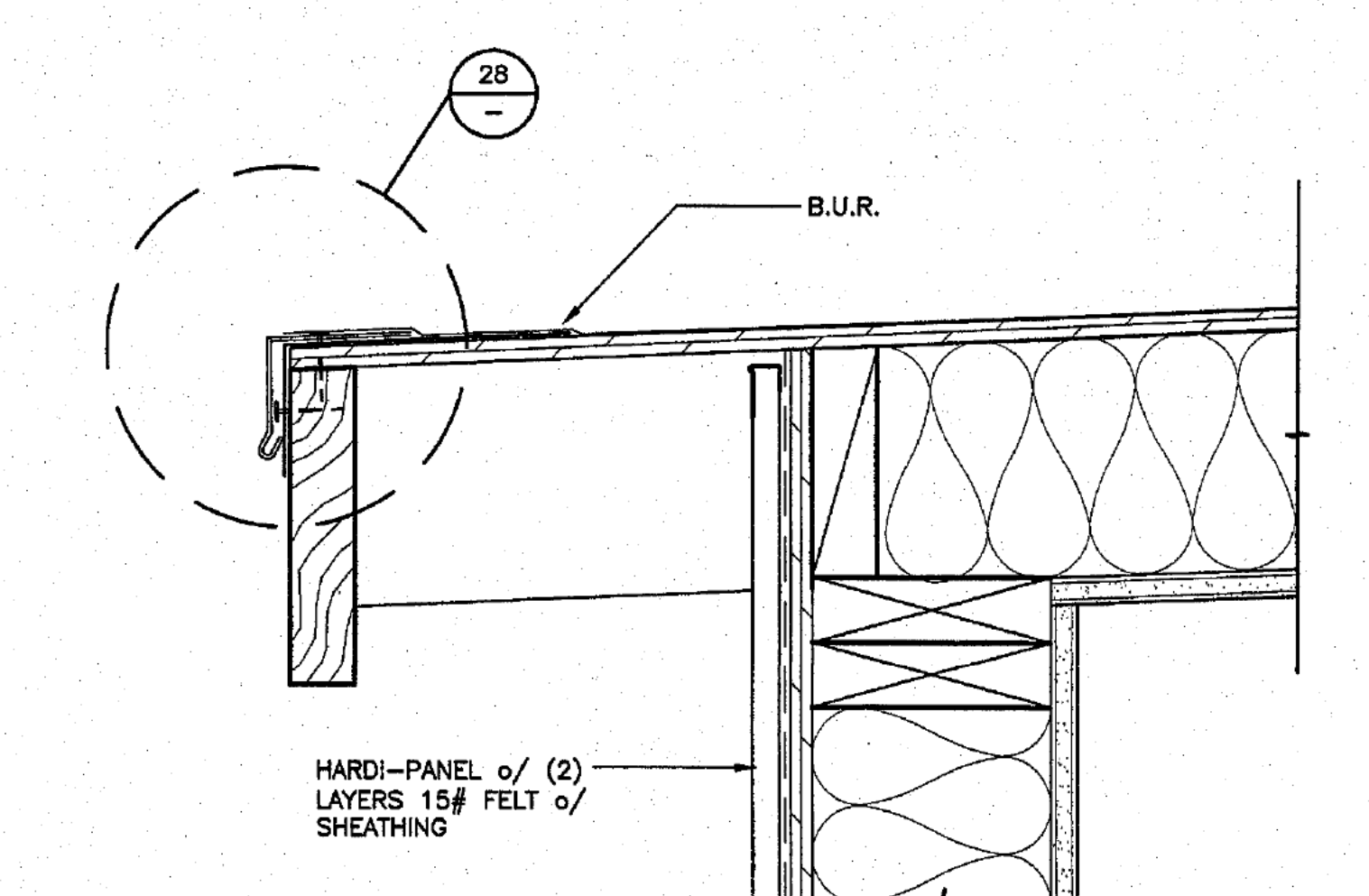
16 BLDG 'E' - WALL TO ROOF

3"=1'-0"



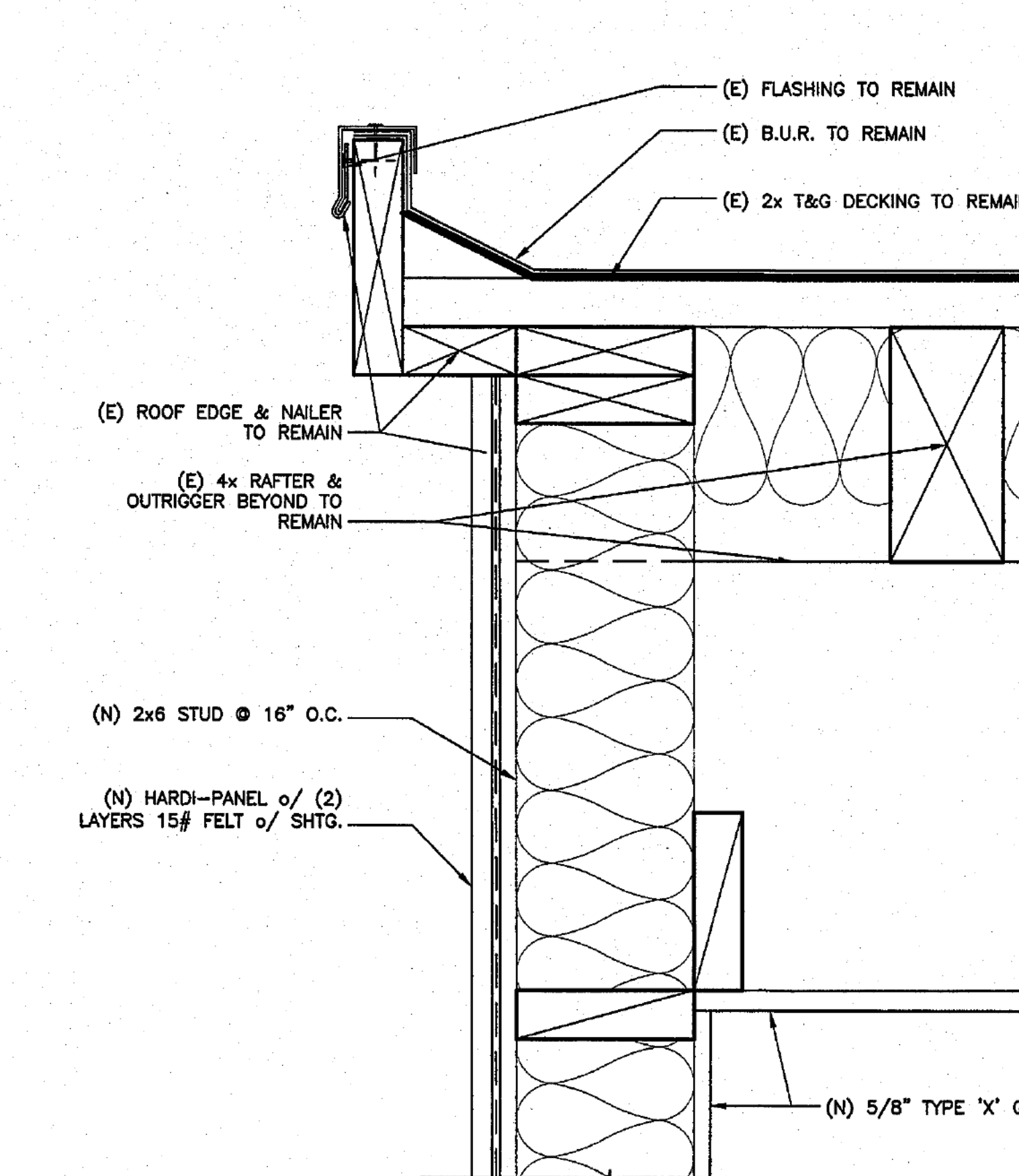
10 BLDG 'E' - RAKE DETAIL

3"=1'-0"



8 BLDG 'E' - EAVE DETAIL

3"=1'-0"



6 BLDG 'A' - EAVE DETAIL

3"=1'-0"

FOREST GROVE ELEMENTARY
ROOFING & PAINTING
PROJECT No. MD-003

Buildings:

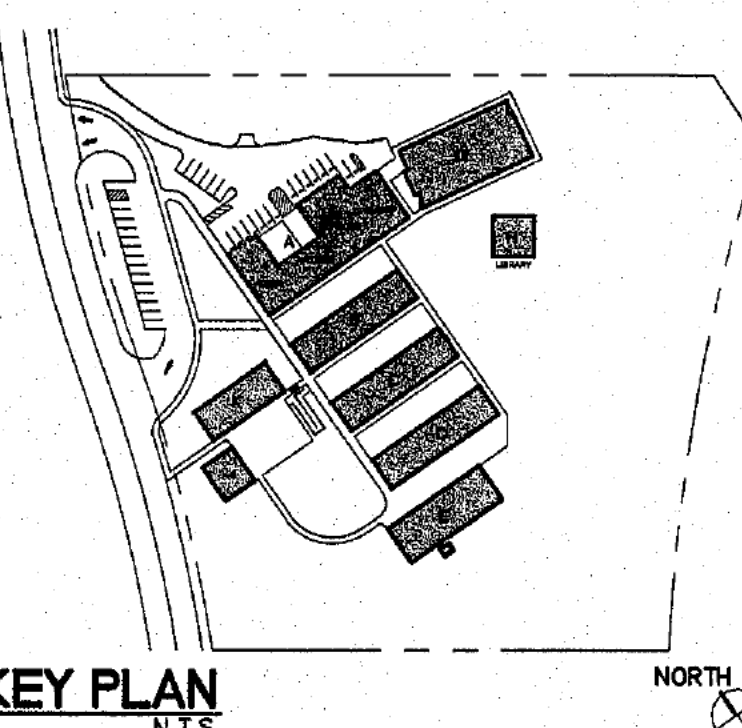
A
G
K

Consultants:

Agency Approvals:

Revisions

No. Description Date



Forest Grove Elementary School

1065 CONGRESS AVENUE
PACIFIC GROVE, CA. 93950

ROOF DETAILS

Drawn by:

Checked:

Approved:

Project No.
MD-003

Date
NOVEMBER 30, 2009

Drawing No.

A10.1

THE USE OF THESE PLANS AND SPECIFICATIONS SHALL BE RESTRICTED TO THE ORIGINAL SITE FOR WHICH THEY WERE PREPARED AND PUBLICATION THEREOF IS EXPRESSLY LIMITED TO SUCH USE. RE-USE, REPRODUCTION, OR PUBLICATION BY ANY METHOD, IN WHOLE OR IN PART, IS PROHIBITED. TITLE TO THE PLANS AND SPECIFICATIONS REMAINS IN THE ARCHITECT WITHOUT PREJUDICE. VISUAL CONTACT WITH THESE PLANS AND SPECIFICATIONS SHALL CONSTITUTE PRIMA FACIE EVIDENCE OF THE ACCEPTANCE OF THESE RESTRICTIONS.